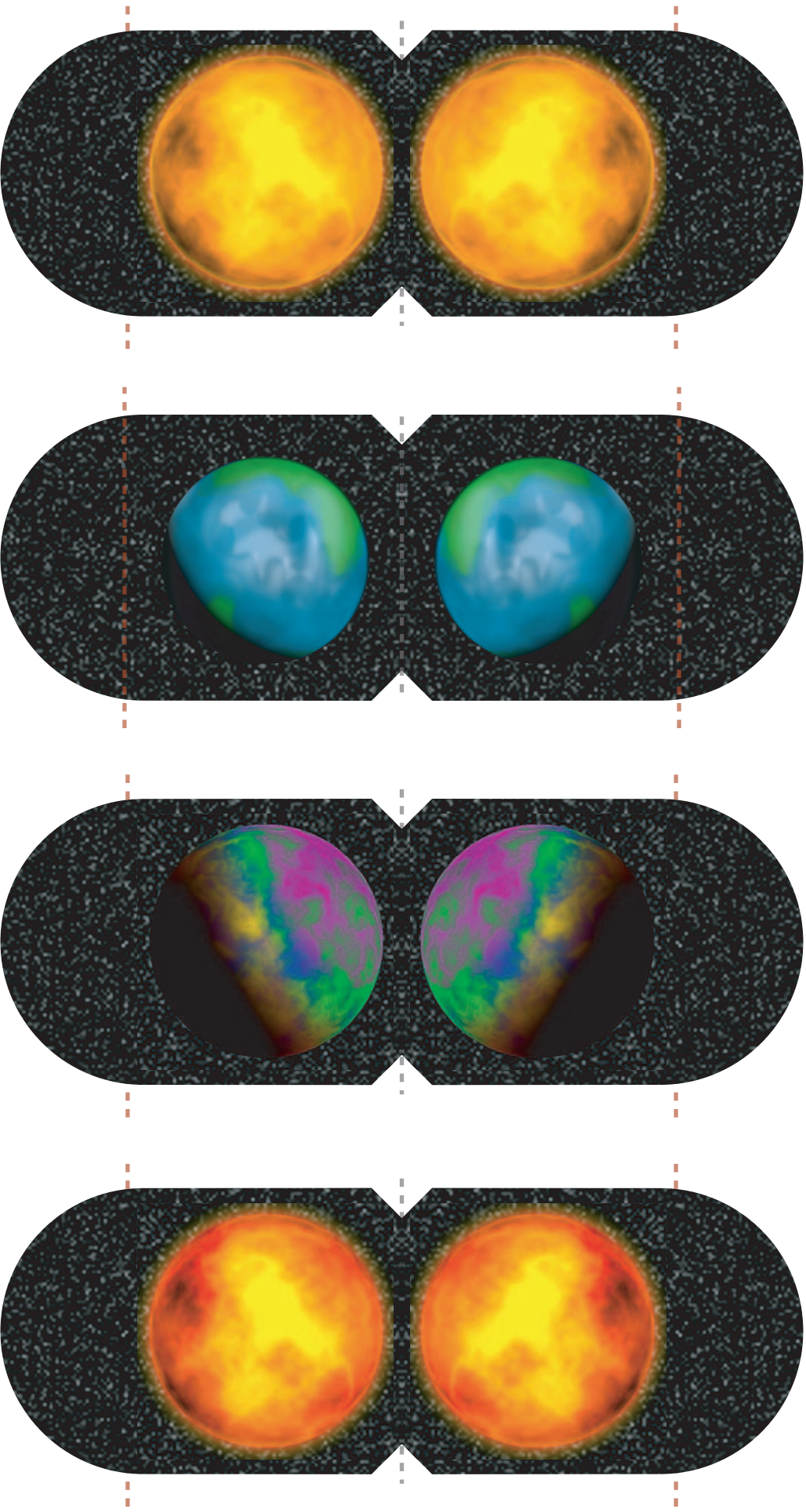


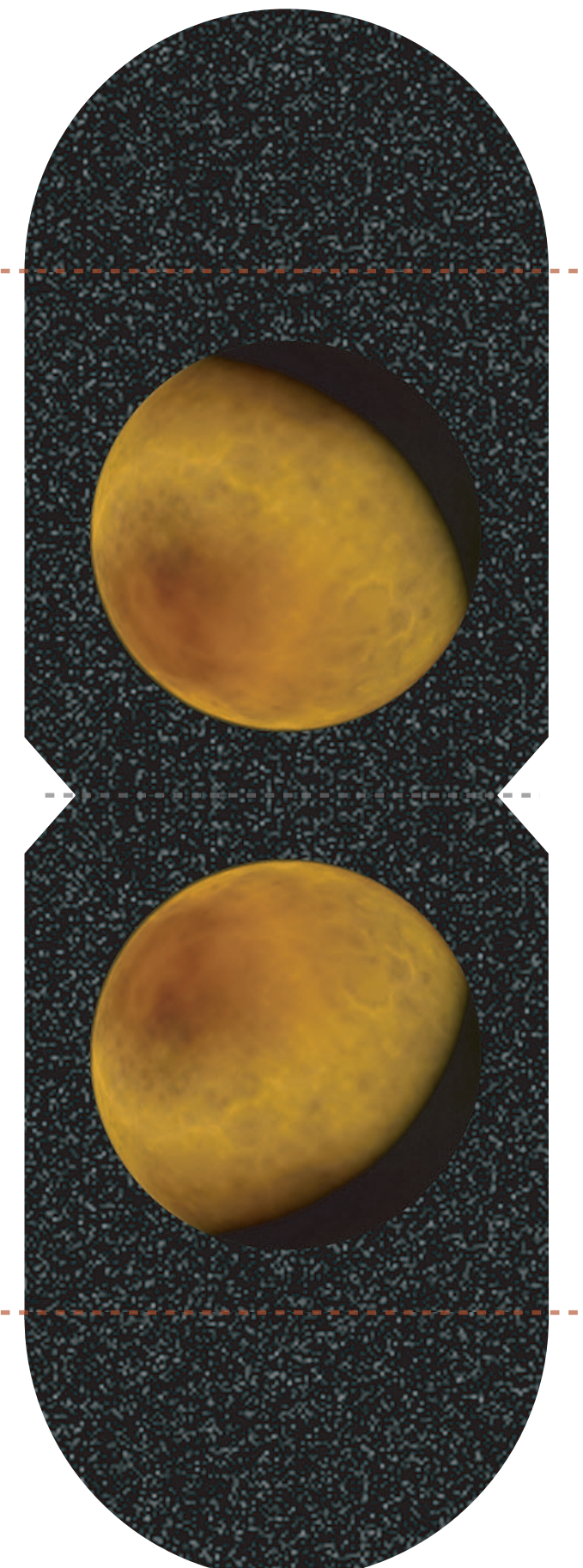
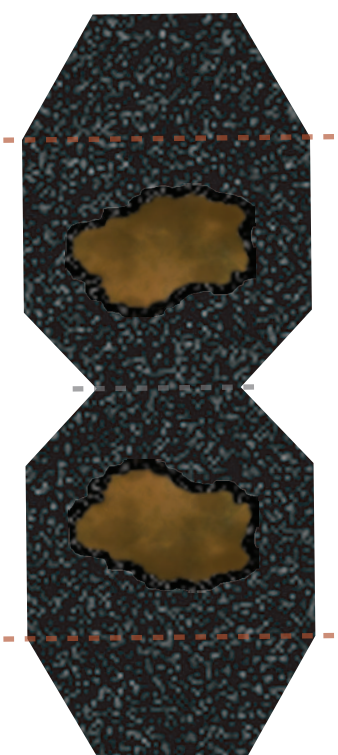
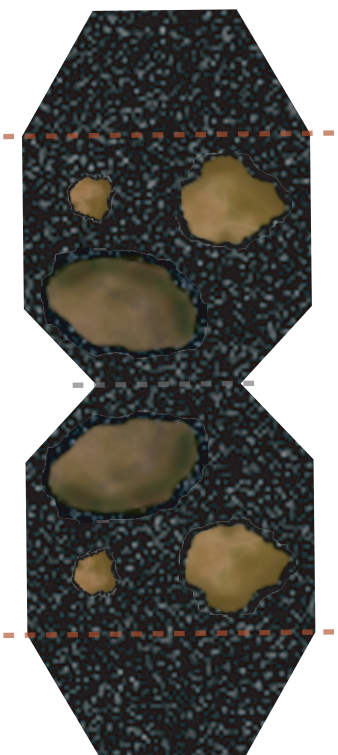
# KETO System



Instructions: Print out sheets as desired. Mount on cardstock using rubber cement or spray adhesive. Cut along border of counters. A sharp hobby knife and small straight edge will yield the best results. Score along dashed grey lines, and on underside along dashed red lines. Fold in half along center, and fold bases outward. Glue back faces of body panel together. White boxes on ship bases are for identifiers. Copyright RocketShip Games, Joe Koppena 2006.



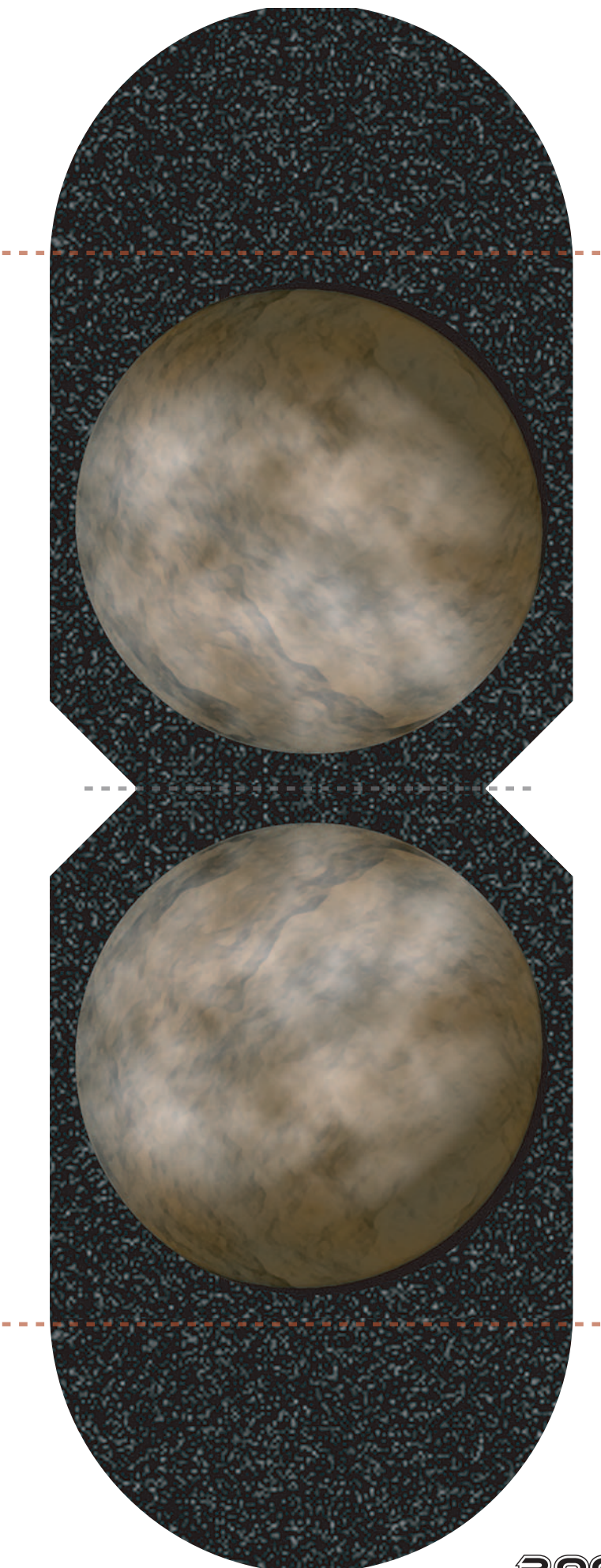
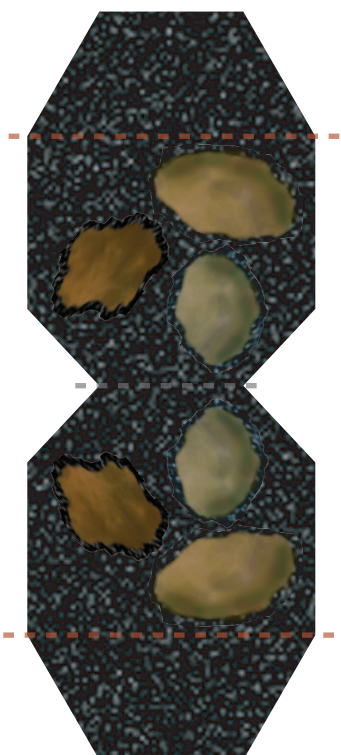
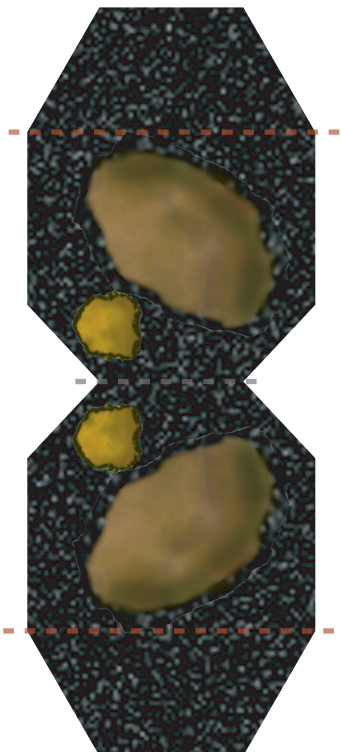
# KETO System



Instructions: Print out sheets as desired. Mount on cardstock using rubber cement or spray adhesive. Cut along border of counters. A sharp hobby knife and small straight edge will yield the best results. Score along dashed grey lines, and on underside along dashed red lines. Fold in half along center, and fold bases outward. Glue back faces of body panel together. White boxes on ship bases are for identifiers. Copyright RocketShip Games, Joe Koppena 2006.



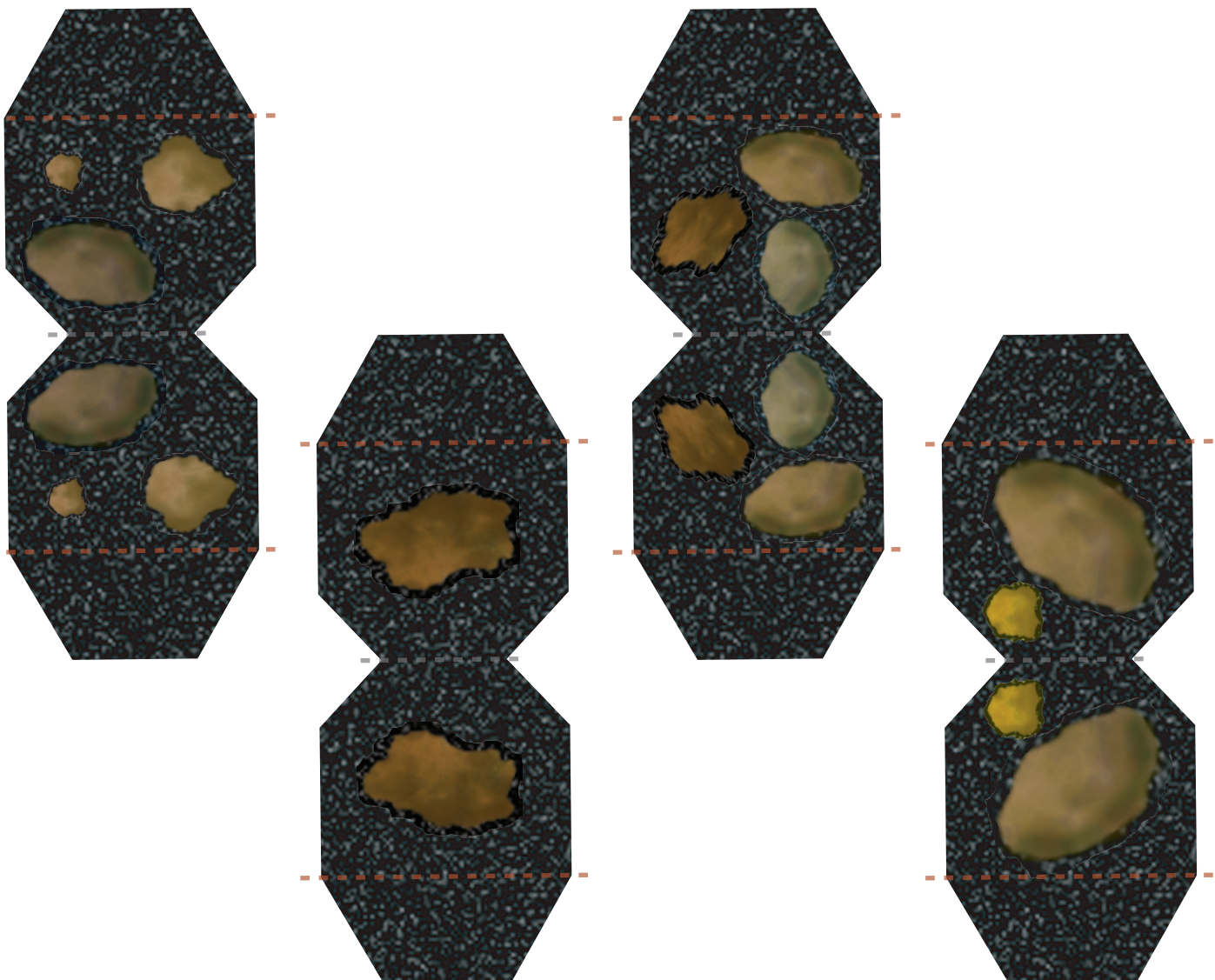
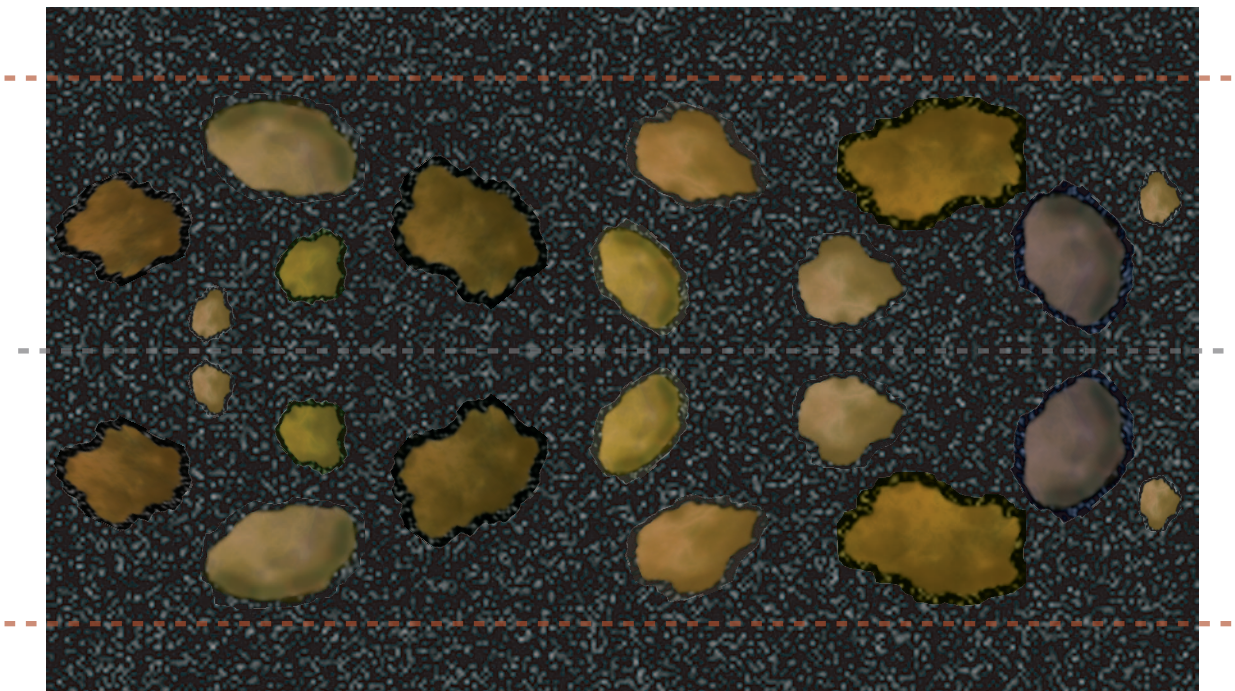
# KETO System



Instructions: Print out sheets as desired. Mount on cardstock using rubber cement or spray adhesive. Cut along border of counters. A sharp hobby knife and small straight edge will yield the best results. Score along dashed grey lines, and on underside along dashed red lines. Fold in half along center, and fold bases outward. Glue back faces of body panel together. White boxes on ship bases are for identifiers. Copyright RocketShip Games, Joe Kopena 2006.



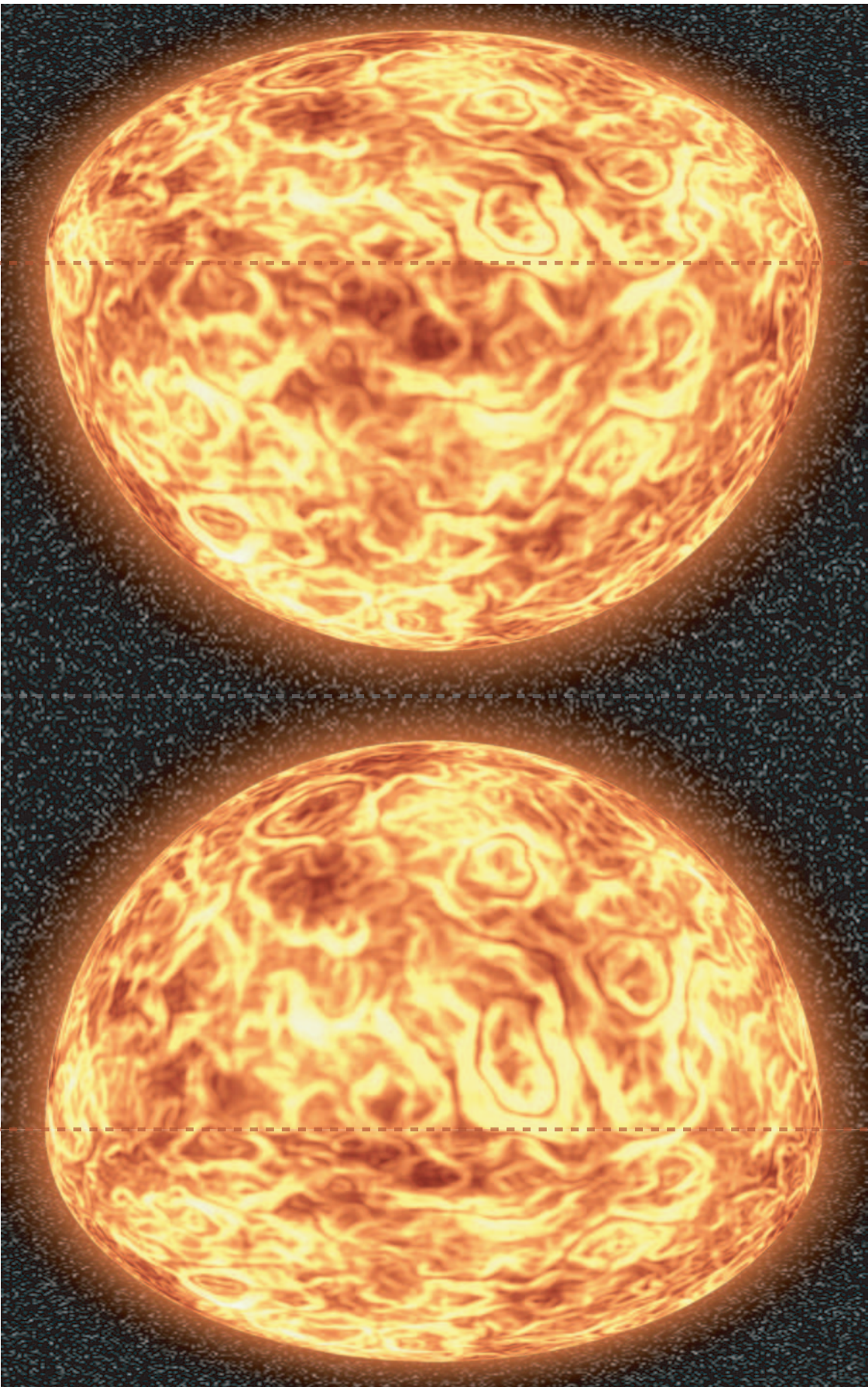
# KETO System



Instructions: Print out sheets as desired. Mount on cardstock using rubber cement or spray adhesive. Cut along border of counters. A sharp hobby knife and small straight edge will yield the best results. Score along dashed grey lines, and on underside along dashed red lines. Fold in half along center, and fold bases outward. Glue back faces of body panel together. White boxes on ship bases are for identifiers. Copyright RocketShip Games, Joe Koppena 2006.



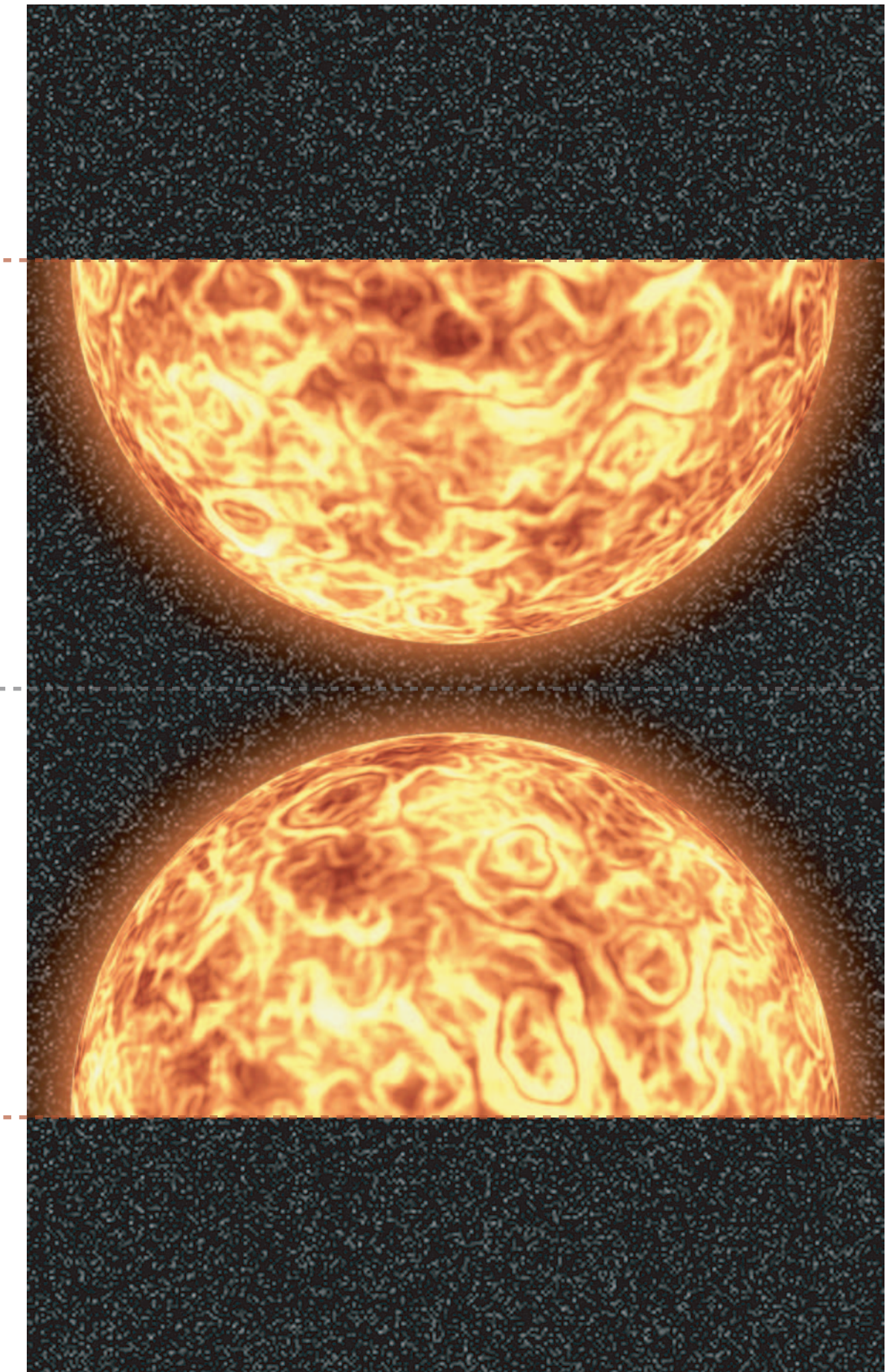
# KETO System



Instructions: Print out sheets as desired. Mount on cardstock using rubber cement or spray adhesive. Cut along border of counters. A sharp hobby knife and small straight edge will yield the best results. Score along dashed grey lines, and on underside along dashed red lines. Fold in half along center, and fold bases outward. Glue back faces of body panel together. White boxes on ship bases are for identifiers. Copyright RocketShip Games, Joe Kopena 2006.



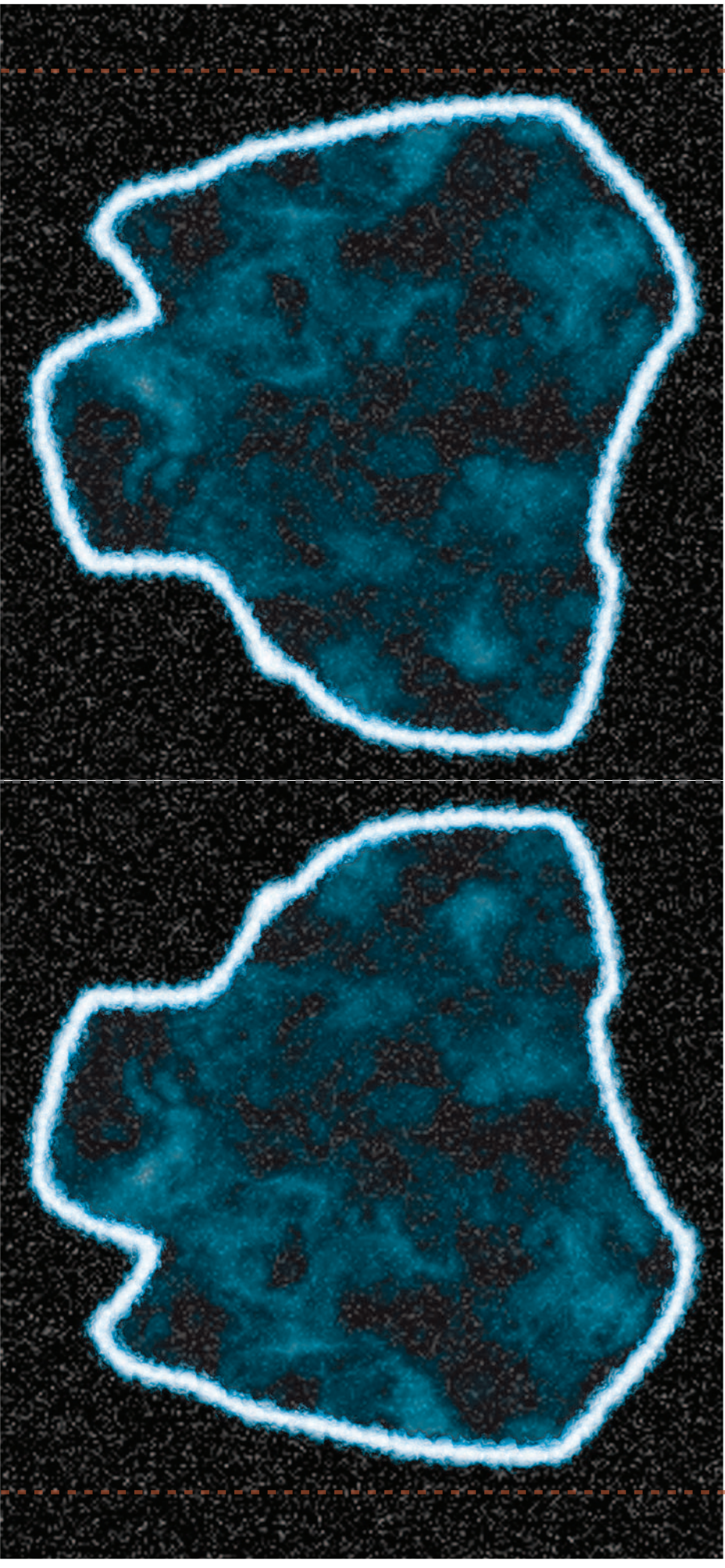
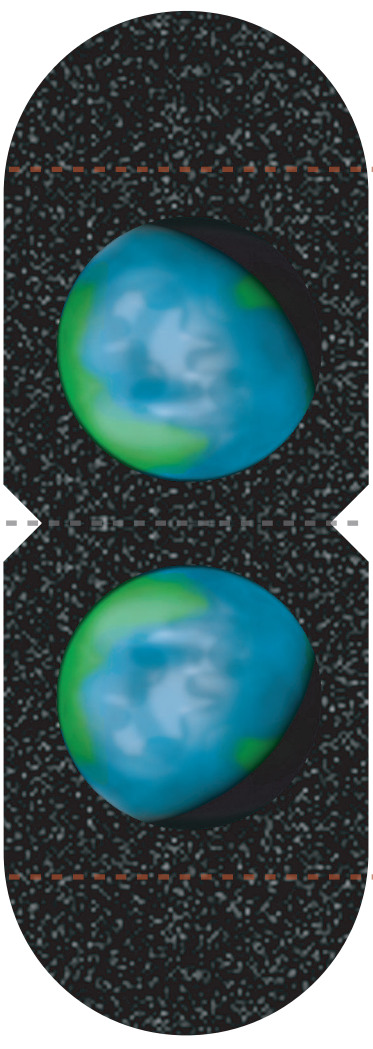
# KETO System



Instructions: Print out sheets as desired. Mount on cardstock using rubber cement or spray adhesive. Cut along border of counters. A sharp hobby knife and small straight edge will yield the best results. Score along dashed grey lines, and on underside along dashed red lines. Fold in half along center, and fold bases outward. Glue back faces of body panel together. White boxes on ship bases are for identifiers. Copyright RocketShip Games, Joe Kopena 2006.



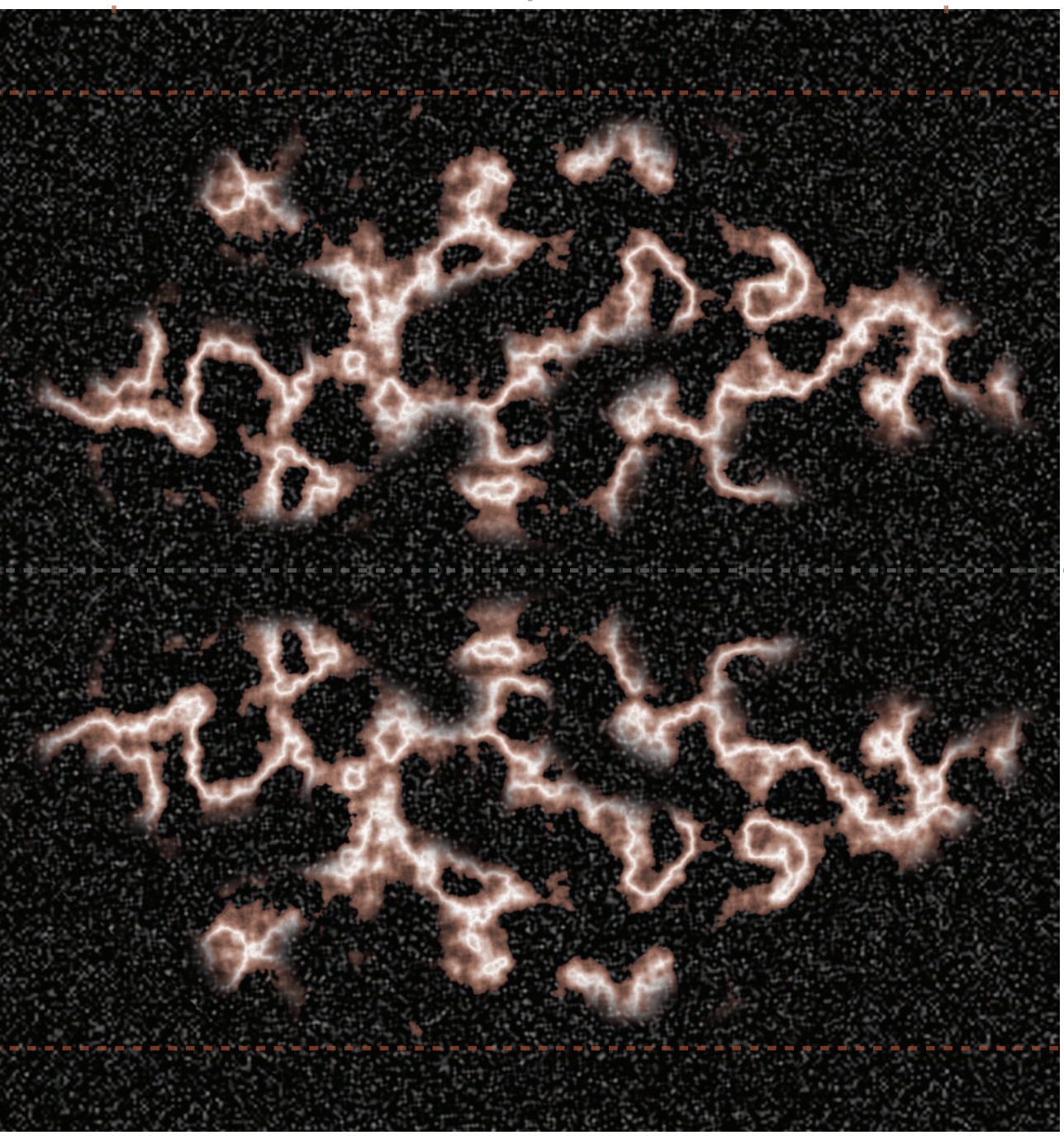
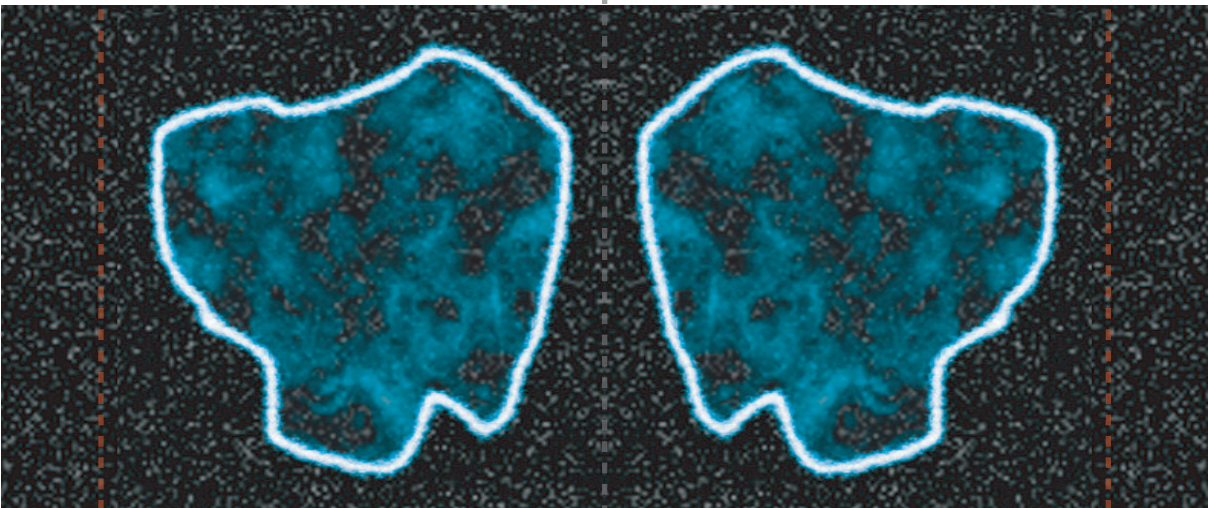
# KETO System



Instructions: Print out sheets as desired. Mount on cardstock using rubber cement or spray adhesive. Cut along border of counters. A sharp hobby knife and small straight edge will yield the best results. Score along dashed grey lines, and on underside along dashed red lines. Fold in half along center, and fold bases outward. Glue back faces of body panel together. White boxes on ship bases are for identifiers. Copyright RocketShip Games, Joe Kopena 2006.



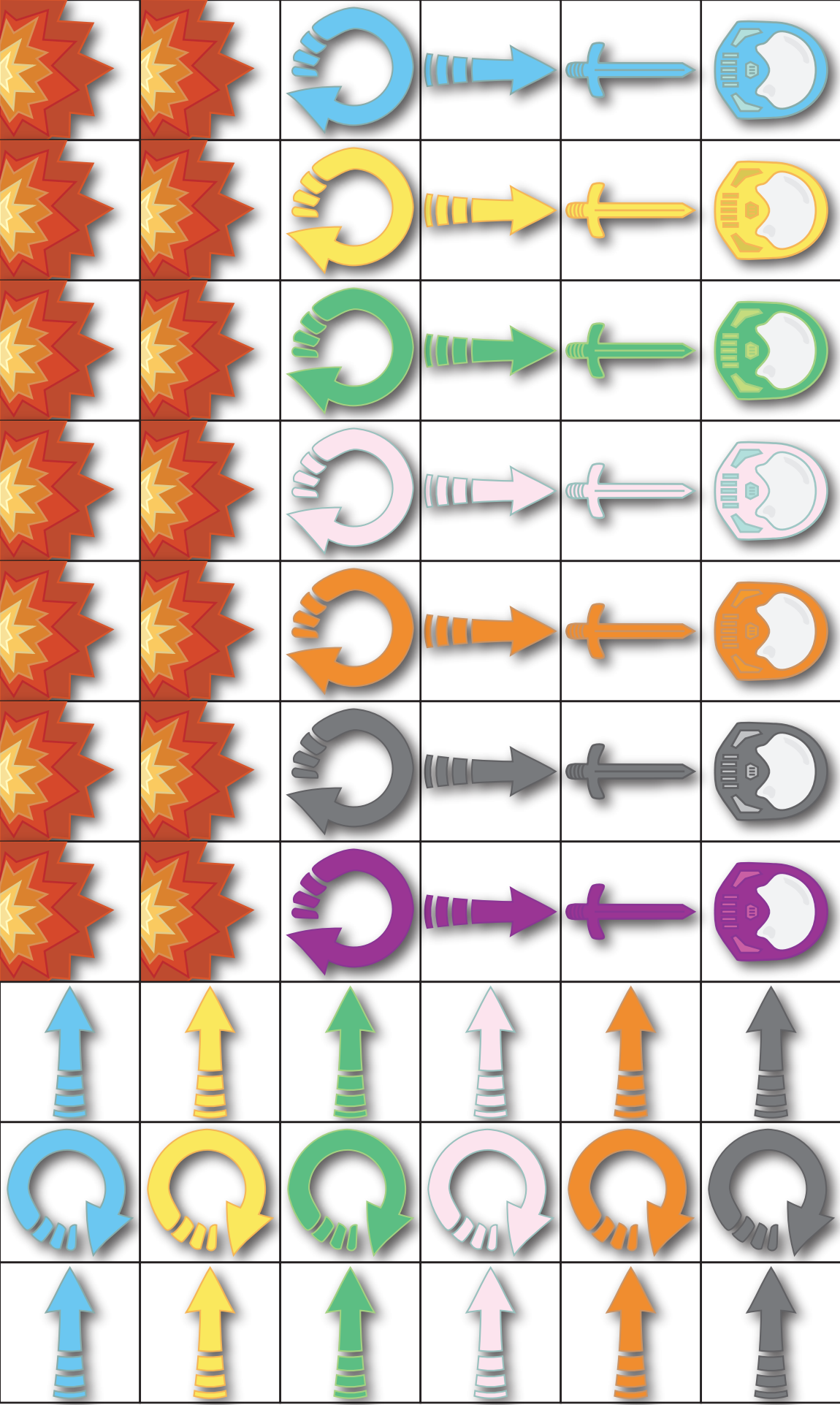
# KETO System



Instructions: Print out sheets as desired. Mount on cardstock using rubber cement or spray adhesive. Cut along border of counters. A sharp hobby knife and small straight edge will yield the best results. Score along dashed grey lines, and on underside along dashed red lines. Fold in half along center, and fold bases outward. Glue back faces of body panel together. White boxes on ship bases are for identifiers. Copyright RocketShip Games, Joe Kopena 2006.



# KETO System



Instructions: Print out sheets as desired. Mount on cardstock using rubber cement or spray adhesive. Cut along border of counters. A sharp hobby knife and small straight edge will yield the best results. Score along dashed grey lines, and on underside along dashed red lines. Fold in half along center, and fold bases outward. Glue back faces of body panel together. White boxes on ship bases are for identifiers. Copyright RocketShip Games, Joe Kopena 2006.